

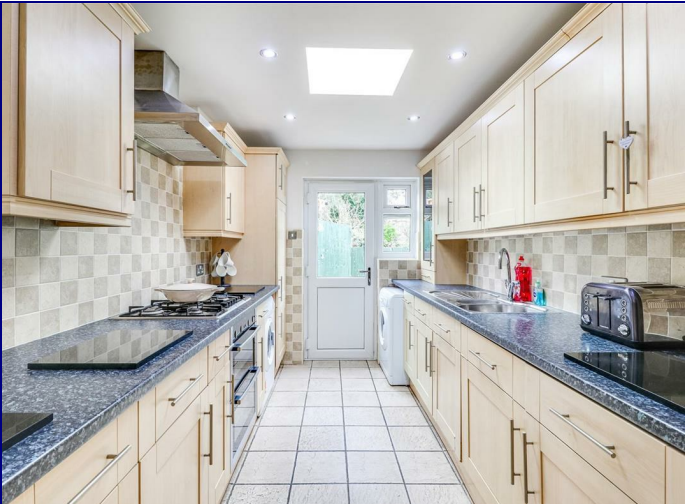


www.kings-group.net

186 Hertford Road
Enfield Highway EN3 5AZ
Tel: 020 8805 5959

Meads Road, Enfield, EN3 5HR
Offers In The Region Of £425,000

KINGS GROUP Are delighted to offer this THREE BEDROOM HOUSE to the Market. Situated within great Proximity to all local SHOPS & AMENITIES, Including Brimsdown Station which offers great access to both TOTTENHAM HALE & LONDON LIVERPOOL STREET. This Tunnel Linked TERRACED home Benefits from a Spacious Reception Room, Fitted Kitchen, Dining Room, Ground Floor Bathroom/Shower Room, Front & Rear Gardens, Large Main Bedroom. In our opinion this would make both an ideal FIRST TIME BUY or a BUY TO LET OPPORTUNITY.



FRONT DOOR TO:

ENTRANCE HALLWAY

Doors to;-

DOWNSTAIRS BATHROOM

With double glazed opaque window to rear, double radiator, panel enclosed bath with shower attached, wall mounted wash hand basin, low level W.C, tiled flooring.

THROUGH LOUNGE

With double glazed window to front, single radiator, TV point, power points, laminated wood style flooring.

KITCHEN

With double glazed window to rear, range of base and wall units with roll top work surfaces, stainless steel double sink and drainer unit, electric oven/ gas hob, plumbed for washing machine, power points, tiled flooring.

FIRST FLOOR LANDING

With doors to and carpeted flooring.

BEDROOM ONE

With double glazed window to front, double radiator, TV point, power points, carpeted flooring.

BEDROOM TWO

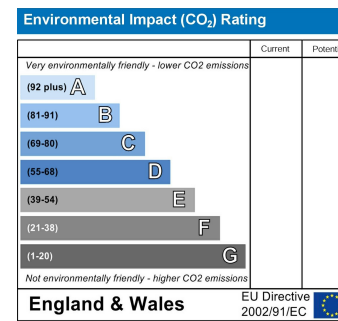
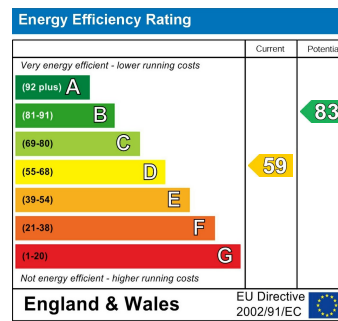
With double glazed window to rear, single radiator, power points, carpeted flooring.

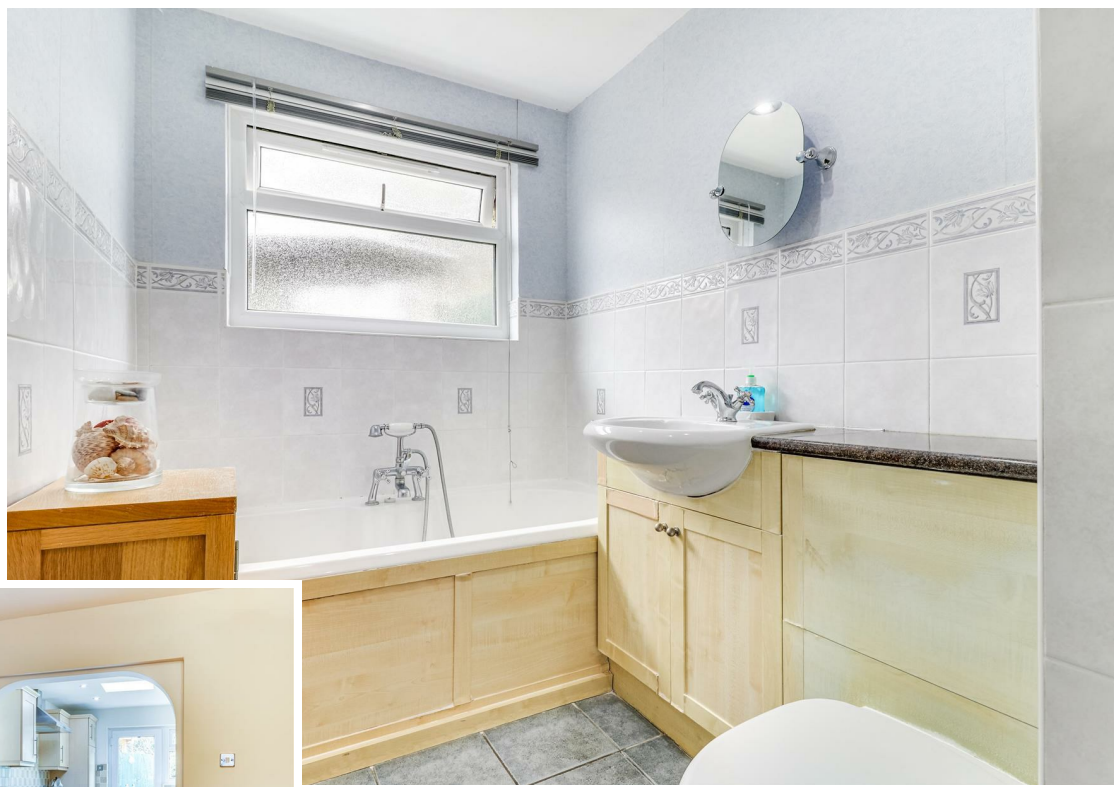
BEDROOM THREE

With double glazed window to rear, single radiator, power points, carpeted flooring.

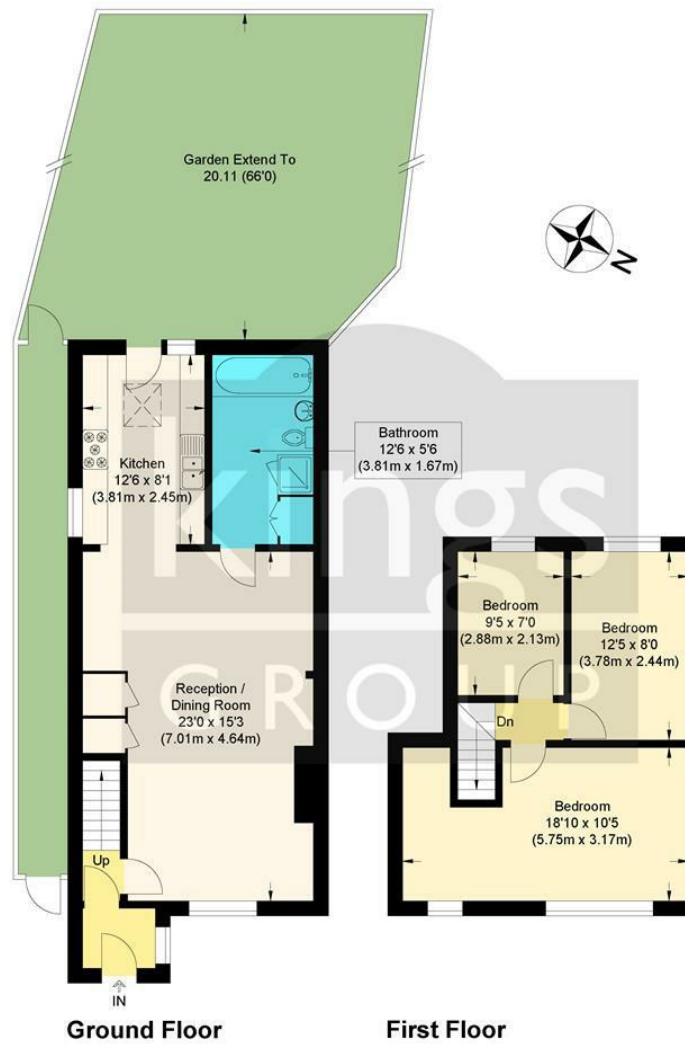
GARDEN

Mainly laid to lawn, side access, outside tap and lighting.









Approximate Gross Internal Floor Area : 88.80 sq m / 955.83 sq ft
 Illustration for identification purposes only, measurements are approximate, not to scale.

